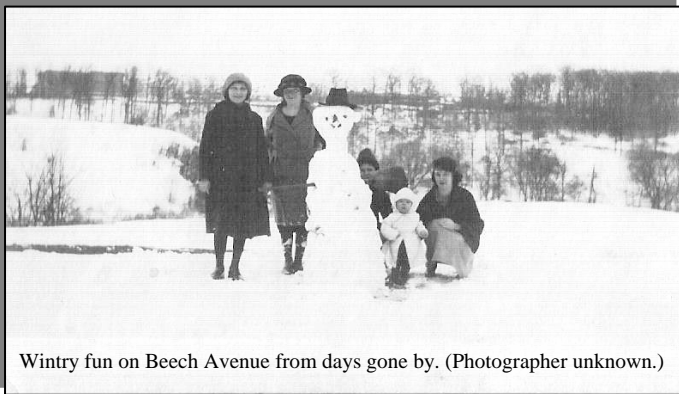


WPCA Oral History Project – Ms. Hilda Weitzell

Of 3600 block Beech Avenue

This is another in an occasional series of oral histories as told by long-time residents of the Wyman Park community. This interview was recorded February 4, 2007, and edited slightly for this issue.



Wintry fun on Beech Avenue from days gone by. (Photographer unknown.)

I was born in the house which my great grandparents bought when it was about 4 years old. It was built in 1890. This house and the others like it on this block were the original houses along Wyman Park.

When this house was built there was no running water, indoor plumbing or electricity so all the houses then had to have outhouses. Later on my family added on the kitchen and upstairs bathroom. Our house was heated from the stove in the kitchen and later with coal. Some houses used wood for heat. We basically lived in the back of the house - the front room was the parlor. It had a fireplace but was just for special company or for Christmas or for burying - people would be laid out in the parlors at home in those days.

I remember as a child that we used to buy fresh vegetables and fruits from the A-rabers who would come through the neighborhood with their horse and carts. We also would get eggs delivered, and milk would be delivered every morning from the dairy which is where Super Fresh is now on 41st Street. In winter the cream would freeze at the top of the bottle. A photographer would come around the neighborhood every now and then and would take pictures if the family wanted.

By the time I was old enough to play in the park, Tudor Arms had been paved and we were all roller skating - those clip-on skates. For a long time there was

no curb on the east side of Beech Avenue - just on the side where the houses were. They didn't put in the curbs until 1949 or 1950 - thereabouts.

There used to be fireworks at Memorial Stadium on the 4th of July and we could see them from our houses because the trees out front were smaller but that only lasted for a few years before the trees got too big to see over.

When it was hot we'd take mattresses down to the front room and sleep - not in the park but in our yards. At the time people wouldn't lock their doors or windows. And on still nights you could hear some of the animals from the zoo - that was before Interstate 83 was built.

When the Ma and Pa railroad was running we'd go down to in the park and wave. The passenger train ran up and down once a day along what is now the walking path on the Wyman Park side of Stony Run. There were other trains which ran on these tracks which carried produce, coal, etc. The closest train station was up on Lake Avenue just off Roland Avenue.

Continued on next page.

WPCA General Membership Meeting

Thursday, February 21
7:30 p.m.

Keswick Multi-Care Center
700 W. 40th Street

Agenda

1. Sewer line Construction to begin---learn more
2. Rotunda development
3. Crime in the Neighborhood---Major Buzzuro, Commander at the Northern District will attend
4. Association sponsored Spring Fling---- learn more about it.

Next meetings: April 17, May 22

Oral history, (cont'd)

I have photos of Beech Avenue when it was a dirt road around 1900. There are some photos of people with tents and others showing the bridges down along Stony Run.

There were two bridges - one of which was almost directly across from our house and the other one which is now narrower but is still there. There was a spring right there by the standing bridge - it's been capped off now but you can see where it was.

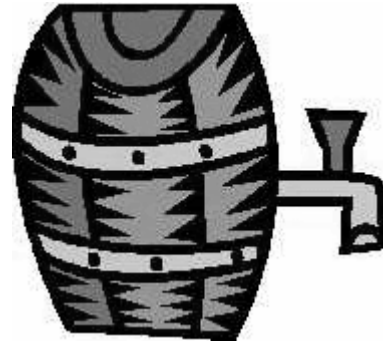
The lower parking lot of Hopkins was the tadpole pond. The pond was really more of a marsh - it wasn't very deep. My brother and his friends had a rope swing which went across the Jones Falls. This was way before there were any building on the other side of Stony Run before you got to Wyman Park Drive. Hopkins owned the property but hadn't built anything there.

Maryland Casualty which is now Zurich used to have beautiful gardens and fish ponds where the Rotunda parking lot is now. There were fountains too. In the winter you would go in the main door of the Rotunda building and see the fish which were kept in a pond in the open area (across from the Rite Aid and eye glass shop where there are now tables). There used to have two buildings - one which is the Rotunda and another one almost exactly like the Rotunda building which is where the Zurich office building is now although the other building didn't have the clock tower.

Thirty-sixth Street was our local shopping area. There was Murphy's and there were two movie theaters and New Systems Bakery. There was a mens' store and womens' store but grocery stores were all around the neighborhood. The grocery store where my father worked was down on Chestnut near where the church is - it was called Jennings. There was also a grocery store at the corner of Beech and 33rd. On Berry Street at Keswick there was a store where you could sell your old comic books. And where Angelo's Pizza is there was a grocery store.

The WPCA Oral History Project plans to record more oral histories. If you or someone you know is interested in participating, please telephone Willy Sydnor or Linda Nevaldin.

Get your rain barrels March 8



(From the JFWA)

The Jones Falls Watershed Association (JFWA) and the Herring Run Watershed Association are teaming up to build and distribute rain barrels for the March 8th Waverly Farmer's Market. The rain barrels are 55-gallon plastic drums that are set up to catch water from your roof via a downspout. The stored water is accessed through a built-in spigot that can be connected to a hose and used anywhere in your yard. Rain barrels not only save you money on your water bill, but also help reduce stormwater runoff to our streams - one of the major sources of pollution to the Jones Falls and the Herring Run.

To order a rain barrel: sgreene@jonesfalls.org.

News from Hampden Community Council

From Allen Hicks, President, HCC

The Mill Valley Cultural Arts Umbrella, Inc. starts up its Internet, web-based community radio station March 1, 2008. Look on the MVCAU web site for information.

The next HCC meeting will be February 25 7:00 p.m. at the Roosevelt Recreation Center. Everyone is welcome.

Anyone having problems with sewer project 800 should contact Kelly Pfeffer at kellyp@communitylaw.org. So far, the community restoration promised has not started by the contractors.

WPCA Discussion Group

To join the online neighborhood discussion, go to: <http://groups.yahoo.com/group/wpca-md> and Yahoo! will "get you set up in three easy steps! Just answer a few simple questions, select an ID and password, and you'll be all set."



alterego
smarter products. modern living

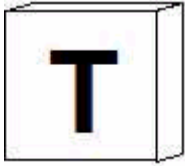
100% recycled glass counters!

green building materials
architectural services
product consultation

www.alter-e.com
443 . 498 . 0144

Scrabble Tournament to benefit literacy classes

(From the GHCC)



The Greater Homewood Community Corporation (GHCC) announced last month it will present its Seventh Annual Scrabble® Fundraiser for Literacy on **Saturday, April 5** at Calvert School (4300 N. Charles

Street) at **6 p.m.** Entry is \$30 (\$20 for students with ID and seniors aged 62 and over). Proceeds will benefit adult literacy and ESOL classes at the Greater Homewood Community Corporation (GHCC).

Games will be offered at both “competitive” and “social” levels. Winners will receive prizes from local retailers and restaurants. Food, refreshments, and free parking are available for all participants.

To register, make a donation, or get information about the Greater Homewood Adult Literacy & ESOL Program, please call (410) 261-3520.

Scrabble® is a trademark of Hasbro in the US and Canada. © 2008 Hasbro. All rights reserved.

WPCA Newsletter

Editor — Bob Feldman

Contributor—Wilmina Sydnor

Design Editor — Kathleen Risk

The Urban Forest Project comes to Baltimore

By Paddy Watson

The Urban Forest Project is coming to Baltimore. The project, which started last year in New York City, is a growing national outdoor exhibition of banners designed by artists and students. Based on the concept of the tree being a symbol of sustainability, the banners are used to link the urban and natural environment.

From April 11th through June 27th 200 banners will be hung throughout several Baltimore City parks. Each park in the exhibition will host individual events to celebrate the park space.

At the end of the exhibition, all of the banners will be recycled into reusable tote bags and sold as original works of art (therefore producing no waste).

All of the proceeds from this project benefit Baltimore City Department of Recreation & Parks Tree Baltimore Campaign.

This exhibition would not be in Baltimore if it wasn't for the tireless efforts of Tilt Studio. Tilt Studio has been working non-stop to make this event a success for the Tree Baltimore Campaign and Baltimore. Please visit the website www.bmore-urbanforestproject.org for more information on this project. There is still time for you to donate to this great cause.

Future WPCA Green Subcommittee Events:

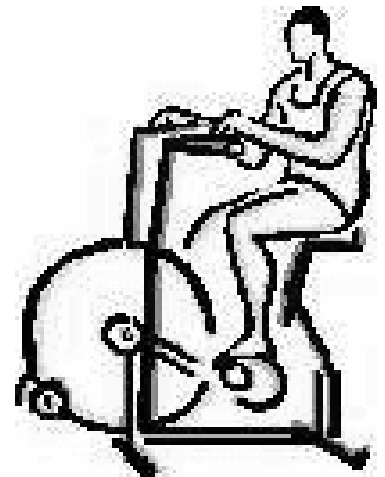
Group tour of the single stream recycling center in Elkridge, date tbd.

Spring Organic Garden Workshop, date tbd.

Local Fitness Center offers exercise for body and spirit

By Bob Feldman

Gospel Aerobics and Gospel Fit Fridays are just some of the programs that set the Fun Fitnezz Center apart from your average health spa and fitness center. You can choose from four membership options, and then take any number of classes, e.g., Cardio Rip-Tide, Gospel Pump, Blood and Guts, and Kick Butt. Owner David Jonathan Cook invites everyone to stop by for a free tour of the facilities at 3627 Keswick Road, right next to the Royal Farm Store.



KESWICK *At Home*

Mary Faith G. Ferretto, LCSW-C
DIRECTOR

410.662.HELP (4357) *phone*

410.662.4240 *fax*

410.899.1510 *pager*

ferrettom@keswick-multicare.org *email*

700 West 40th Street | Baltimore, MD 21211

GREEN EVENTS

Alley Gating and Greening Informational Workshop

Please come to find out more information about Baltimore City's policy on greening and gating the alleys within your community. Guest speaker for the night will be Kate Herrod from Community Greens: Shared Parks in Urban Blocks.

Thursday, February 21, 2008 from 6:00 p.m.-8:00 p.m.

Where: Parks & People Foundation
Stieff Silver Building
800 Wyman Park Drive, Ste. 010
Baltimore, MD 21211

Sunday February 24th, 2008

4:30 - 6:30 pm

MD Presbyterian Church, 1105 Providence Road, Towson, 21286

<http://www.mpchurch.org/directions.htm>

'Maryland's Efforts to Address Climate Change: Where We've Been, Where We're Going' with Brad Heavner & Shelley Morhaim. Brad Heavner is the state's leading, and likely most eloquent authority on climate change, energy policy and environmentalism. He helped lead the MD Healthy Air Coalition, Clean Cars legislation, & reform of the state's power industry. Shelley Morhaim is an attorney, environmental advocate and produced the award-winning film: "The Next Industrial Revolution." We will discuss how Maryland may be poised to adopt the strongest state-level climate policy in the nation, a practical and positive view of how a sustainable economy will work using real life examples including the use of high-performance design and construction (Green Building).

The Baltimore Green Forum is a monthly environmental & discussion forum held on the last Sunday of each month, open to the public free of charge. Co-sponsored by [Simplicity Matters Earth Institute](#), [Green City Baltimore](#), [Hooked on Nature](#), [Network of Spiritual Progressives in MD](#), [Baltimore Jewish Environmental Network](#), [Baltimore Climate Action Network](#), and the [MD League of Conservation Voters Education Fund, Inc.](#)

The Wyman Park Community Association, Inc.

Kathleen Talty, *President*
Beech Avenue

Mollyne Honor, *Vice President*
Beech Avenue

Mara Murdoch, *Secretary*
Keswick Road

Linda Nevaldine, *Treasurer*
Beech Avenue

Joe Jackson, *Parliamentarian*
Tudor Arms Avenue

Directors

Rick Brummer, 10
Tudor Arms Avenue

Emily Grant, 10
Gilman Terrace
Michal Makarovich, 08
Beech Avenue

Joselin Martin, 08
Tudor Arms Avenue

Eugene Meyer, 09
Beech Avenue

Tom McGilloway, 09
Beech Avenue

Kathleen Risk, 08
Tudor Arms Avenue

Lissa Rotundo, 10
Beech Avenue

Donna (Jinx) Schwartz, 09
Beech Avenue

Willy Sydnor, 10
W. 33rd Street

Lura Warren, 08
Tudor Arms Avenue

Paddy Watson, 09
Gilman Terrace

Membership Become Part of a Strong Voice

\$10 gets your household a membership in your community association, and guarantees you will not miss a single issue of Wyman Park's best newsletter through September 30, 2008.

Contact Linda Nevaldine, Treasurer - treasurer@wymanparkcommunity.org for membership sign-up information (mailing address deleted for web posting.)

Name: _____

Address: _____

Phone: _____ E-mail: _____

**www.
wymanparkcommunity
.org**